

# NEW Planning Application for Development

## LAND EAST OF WATERMEAD

for up to 1560 dwellings, primary school, mixed-use local centre (small-scale retail, employment, health-care, sports, community uses), green infrastructure, new main link road A413 to A418

This is a separate application from the previous one (13/00391/AOP), which was REFUSED by AVDC and is now at appeal.

Comments are required **BY 24TH JANUARY 2014**.



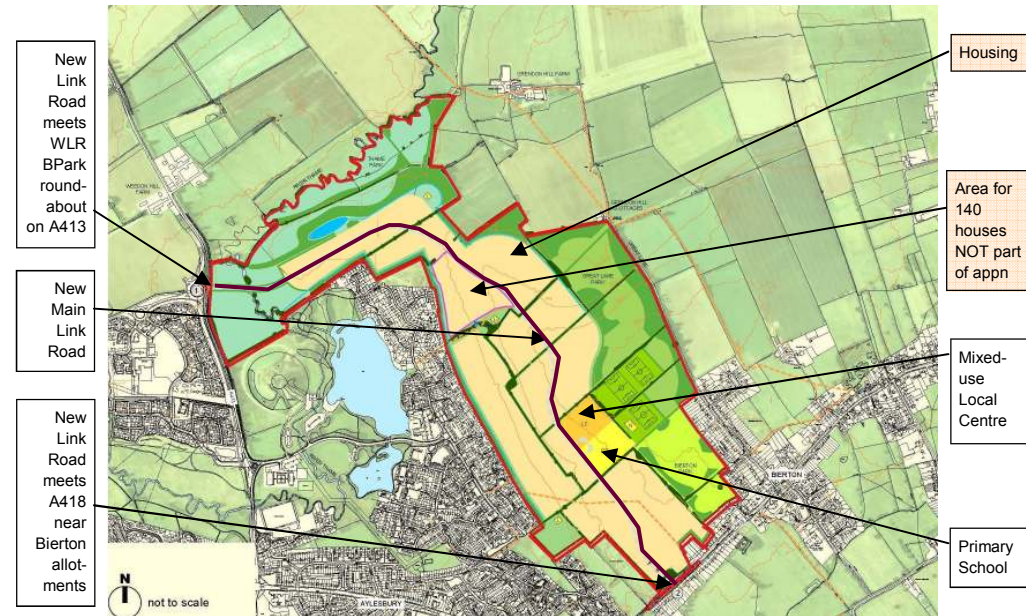
There is no change to the plans from those which were submitted last year under the previous application number. However, there is more supporting documentation supplied.

Weedon Parish Council will have the plans available at its forthcoming meeting, at which the Parish Council will also consider its own response. You don't have to wait to put in your own comment—see overleaf for full details. Any comments you made to the previous application will NOT be carried forward—you must submit again under the new reference.

**Wednesday 15th January 2014 Old Schoolroom**

**8pm First item on parish council meeting agenda**

## 13/03534/AOP Application for Outline Planning Permission Land East of A413 Buckingham Road and Watermead



- ▶ Up to **1,560 new dwellings**
- ▶ 2-form entry primary **school and nursery**
- ▶ Mixed-use **local centre** (8,000 sq m) of small-scale retail, employment, healthcare, sports pavilion, community uses and some residential
- ▶ New **Main Link Road** to connect A413 and A418 including River Thames crossing

- ▶ **Green infrastructure** of new community parks, including linear park, landscaping including new woodland planting, open space, allotments, sports and play areas
- ▶ Sustainable urban **drainage** system (SuDS)
- ▶ New walking and cycling routes, ground modelling and infrastructure provision including drainage, parking and lighting

Make your comments, quoting the application reference **13/03534/AOP**

Online: <http://publicaccess.aylesburyvaldc.gov.uk/online-applications/>

Email: [devcon@aylesburyvaldc.gov.uk](mailto:devcon@aylesburyvaldc.gov.uk)

Write to: **AVDC Planning, The Gateway, Gatehouse Road, Aylesbury, Bucks HP19 8FF.**